



Money Available!

Are you aware that if you are a member of Worcestershire YFC, there is a pot of money available to you?!

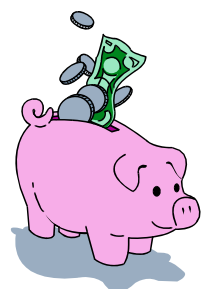
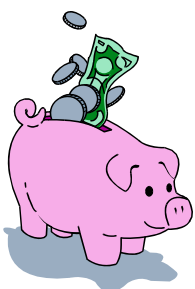
Tell Me More!

Money has been kindly left to us by Mrs Jessie Harper whose wish is to advance the education of WFYFC members. This money is known as the 'Educational Fund'.

What can I use it for?

Is there something you have always wanted to do or learn but just never got around to it? Here are some ideas...

- *Perhaps you have an invention or a new product you want to develop further, let us know the idea and WFYFC can maybe give you money to buy necessary equipment!*
- *Perhaps you know of a training course that would help you in your choice of career!*
- *Perhaps you have realised that the job you're in is not for you but in order to change to one you enjoy you need to learn new skills - maybe we can help!*
- *Perhaps as a Club you wish to learn a skill that will help you all as members in the world of YFC!*
- *Do you have a hobby you wish to pursue further especially in agriculture or horticulture - e.g. hedging or flower arranging?*
- *Mrs Jessie Harper was particularly interested in the art of beekeeping & we are committed to fund any suitable projects in this field*



How much is available?

The maximum amount available to you per application is £250.00, limited to £1000.00 per year.

How do I apply?

To apply for the educational fund you will need to submit an application form. These forms are available from the YFC County Office or from the website: www.worcsyfc.org.uk. Submitted applications are reviewed by the Board of Management Committee at each of their bi-monthly meetings (Feb; Apr; Jun; Aug; Oct; Dec). Dates of the Board of Management meetings can be found on the website. If there are a number of applicants or further information is required, you may be asked to attend an interview, however this is not always necessary. Once your application has been viewed you will be notified of the outcome and if you have been successful the conditions of the fund will be specified.

Are there any other details I should know about?

The only other point to remember is that you must be a fully paid up member of WFYFC and be between the ages of 10 – 26.

If you have any questions about the Educational Fund, then please contact County Office.

Good Luck in your applications!

